

# CORRIDOR CONNECTIONS

*The Official Newsletter of SCILS  
STEM Collective for Innovative Louisiana Stakeholders*

Cathi Cox-Boniol, SCILS Region 8 LaSTEM Center Director  
region8lastem@gmail.com, ccox@latech.edu, or 318-268-7558  
<https://community.latech.edu/scils-region-8-lastem-center/>

## SCILS Teams Up with Louisiana Tech University Kappa Delta Sorority for an Easter STEM Event



SCILS teamed up with Kappa Delta to host a special Easter-themed STEM event for area Girl Scouts to help build confidence while celebrating girl power and sisterhood. The event featured design challenges that included the Easter Egg Rocket, Jellybean Tower, Easter Egg Catapult, and Peeps Go Mobile. Glen View Elementary School 1st grader Alana Thompson from Troop 11 is seen working with Anna Grace Harmon (left) and Anna Quinlan (right) to complete the car she designed to carry her marshmallow Peep.

### Take a Look Inside:

*Louisiana Delta Community College Services Area Young People, Math Professional Development Offered, Louisiana Tech University EPSCoR Grant Program Underway, Centenary College and Willis Knighton Partner with SCILS*



## SCILS HOSTS NORTH LOUISIANA LaSTEM DIRECTORS FOR SUPERINTENDENTS MEETING

The Region 8 LaSTEM Center invited Jennifer DePriest, Region 6 Director, and Dr. Heather Kleiner, Region 7 Director, to join in providing an overview of the various LaSTEM efforts within their region for the superintendents leading the school districts across the northern half of Louisiana. In addition to the presentations, there was a time for networking between the directors and the administrators.

## DID YOU KNOW?

*Study says youth trust science and recognize its importance*

There is hope on the horizon for science: young people trust science and expect it to solve the world's challenges, reports the 3M 2022 State of Science Index (SOSI). While all generations have exceptionally high trust in science (90% younger, 89% older), younger generations are more likely to say science is very important to their everyday lives (61% of Gen Z and Millennials, vs. 53% of Gen X and Baby Boomers). SOSI data shows people around the world looking to science to drive social impact, including solutions for sustainability, STEM equity and health care challenges.



Want to hear the SCILS Director discuss LaSTEM during the Beyond 1894 Podcast? Visit <https://1894.latech.edu/podcast/> for feature #44 from Cathi Cox-Boniol entitled "The E in STEM Stands for Elvis."



## Louisiana Delta Community College Serves Area Students

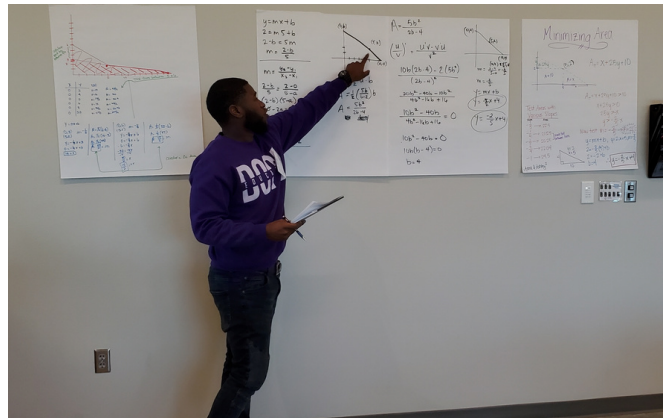
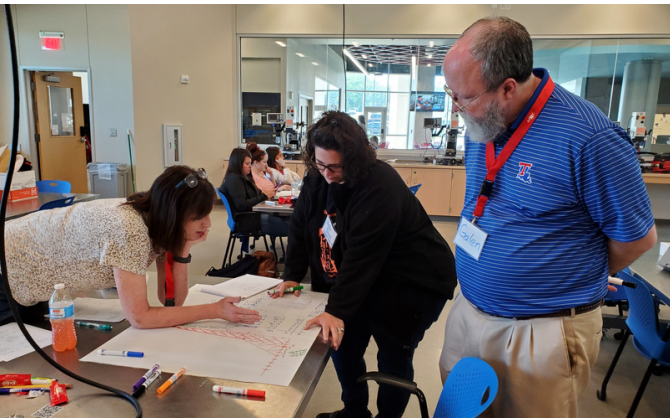
*Nadja Haynie, CTE Coordinator for the Ruston and Jonesboro campuses of Louisiana Delta Community College, and Julie Salter, LDCC Career and Job Placement Specialist, recently held two Professionalism Workshops for area students. With a workshop held on both the Ruston and Jonesboro campuses, the duo was able to talk with 36 LDCC students about resumes, proper social media, interviews, and the job search process. In addition, 25 seniors from Lincoln Preparatory School in Grambling were invited to attend the session on the Ruston campus where they networked with LDCC welding faculty to discuss the type of skill sets needed to enter the program and the length of time to receive a degree. During the experience, LDCC welding students were able to serve in a mentoring role and discuss why they chose the program and school and how it has helped them achieve their goals. Haynie and Salter ended the session by covering all programs on the LDCC Ruston campus, cost of attendance, student activities and organizations and why the high school students should consider LDCC as their college of choice. Before Lincoln Prep left to return to campus, three students had already signed up to attend the summer semester.*



**LOUISIANA DELTA**  
COMMUNITY COLLEGE

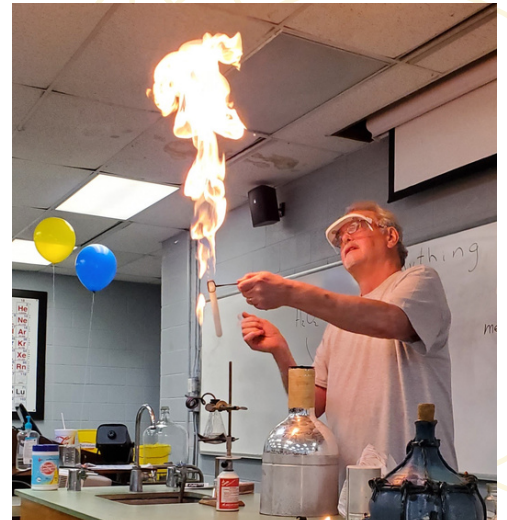
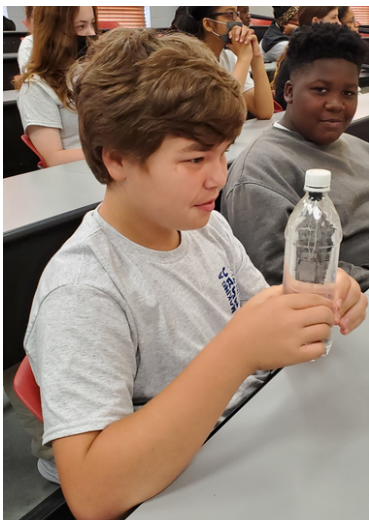
## SCILS Teams Up With the Department of Mathematics and Statistics for Math Professional Development

*High school teachers throughout the region gathered on the Louisiana Tech University campus for a special two-day math workshop facilitated by Dr. Galen Turner. The experience not only helped teachers deepen their mathematics knowledge base, it also began preparing them to teach Dual Enrollment classes for their district. In addition to the spring workshop, the participants will enroll in the graduate course Math 401 during the summer.*



## Louisiana Tech University EPSCoR Grant Project Underway

Dr. Bill Deese, Professor in the Department of Chemistry at Louisiana Tech University, teamed up with the SCILS Region 8 LaSTEM Center for the first day of its EPSCoR (Louisiana Established Program to Stimulate Competitive Research) program on the Tech campus. The project entitled "Making a CASE (Collaborating Around STEM Engagement) for Middle Grades" hosted middle grades students from area schools to explore material science through inquiry, demonstrations, interaction with STEM professionals and tours of innovative campus spaces.



# Centenary College and Willis Knighton Partner with SCILS for Summer Medical Scholars Program



Centenary College and Shreveport-Bossier City's Willis-Knighton Health System launched a new summer program pairing Centenary pre-med students with Willis-Knighton doctors for five weeks of job-shadowing and mentoring opportunities. Ten Centenary students, all science majors who have expressed an interest in medical school, will shadow Willis-Knighton doctors from May 30 through July 1. Entrance into the program was competitive and will give students a realistic understanding of how medicine is practiced and how physicians, nurses, technicians, laboratorians and support personnel work together to care for the medical and surgical needs of children and adults. Students will have the opportunity to observe and learn from doctors specializing in family medicine, pediatrics, internal medicine, surgery/robotic surgery, and transplant medicine, among other specialties. "This program will give our students experiences that will enhance their medical school applications," said Dr. Scott Chirhart, professor of biology and pre-med advisor at Centenary. "The shadowing/clinical component is something that we are not able to provide in the classroom, but it is critical to future success." The unique Summer Medical Scholars program is supported by a grant from the Louisiana Board of Regents through the Region 8 LaSTEM Center--SCILS (STEM Collective for Innovative Louisiana Stakeholders)--a group of partners across North Louisiana focused on meeting the critical need for science, technology, engineering, and math learning and job skills in our region.

